

Macon County Schools

EOGs 2002-09

Percent Proficient

Cartoogechaye School

MATH	2001-2002	2002-2003	2003-2004	2004-2005	2005-2006	2006-2007	2007-08	2008-09
3rd	86.1	89.1	95	92.3	95	77.6	80	83.33
4th	95	94.3	94.9	95	78.9	93.8	81.4	88.33
5th	95	95	95	93.5	79.5	77.2	88.4	82.35
READING	2001-2002	2002-2003	2003-2004	2004-2005	2005-2006	2006-2007	2007-08	2008-09
3rd	86.1	89.1	87.2	80.8	95	86.4	58.5	65
4th	80.4	71.7	88.8	86	89.1	95	64.3	71.66
5th	91.2	95	88.2	91.9	95	94.7	78.3	75

Cowee School

MATH	2001-2002	2002-2003	2003-2004	2004-2005	2005-2006	2006-2007	2007-08	2008-09
3rd	86.2	86.7	83.3	95	68.5	64.6	71.4	77.77
4th	94.8	95	95	91.8	76.3	66.1	80.4	93.33
5th	95	95	95	95	74.5	82.1	77.2	82.35
READING	2001-2002	2002-2003	2003-2004	2004-2005	2005-2006	2006-2007	2007-08	2008-09
3rd	77.6	80	70.8	90	81.5	87.5	51	55.55
4th	81	85.7	79.3	73.5	89.5	82.1	68.6	77.77
5th	94.5	92.7	92.5	92.7	89.4	86.7	61.4	74.5

Cullasaja School

MATH	2001-2002	2002-2003	2003-2004	2004-2005	2005-2006	2006-2007	2007-08	2008-09
3rd	93.5	91.4	95	95	70	77.4	82.4	67.56
4th	92.3	90.3	92.5	90	90.3	53.3	78.8	83.72
5th	95	87	90	90	81.5	82.1	67.9	73.17
READING	2001-2002	2002-2003	2003-2004	2004-2005	2005-2006	2006-2007	2007-08	2008-09
3rd	90.3	85.7	95	95	86.7	90	52.9	64.86
4th	88.5	87.1	85	95	93.5	93.1	57.6	58.13
5th	92.6	91.3	76.7	87.5	95	95	53.6	63.41

Macon County Schools**EOGs 2002-09****Percent Proficient****East Franklin**

MATH	2001-2002	2002-2003	2003-2004	2004-2005	2005-2006	2006-2007	2007-08	2008-09
3rd	88.5	95	95	89.2	50.9	60	60	81.81
4th	95	95	95	95	59.4	48.5	80.3	71.66
5th	94	95	95	93.2	75	66.7	56.3	62.9
READING	2001-2002	2002-2003	2003-2004	2004-2005	2005-2006	2006-2007	2007-08	2008-09
3rd	91.8	89.8	79.4	70.8	72.7	78.6	32.8	46.29
4th	82.8	87	89.1	85.7	76.1	81.8	57.6	55.17
5th	92.6	91.1	95	94.9	95	81.8	36.6	58.06

Highlands

MATH	2001-2002	2002-2003	2003-2004	2004-2005	2005-2006	2006-2007	2007-08	2008-09
3rd	92	88.5	94.4	94.4	64	75.9	95	78.57
4th	92.9	95	95	94.4	63.2	83.3	68.8	93.93
5th	95	95	95	95	33.3	64.7	73.1	71.87
6th	95	95	95	95	68.6	72.7	82.4	76.92
7th	95	92	95	80	67.9	78.1	59.3	62.5
8th	88.1	95	92.3	80	51.7	85.2	81.8	65.21
READING	2001-2002	2002-2003	2003-2004	2004-2005	2005-2006	2006-2007	2007-08	2008-09
3rd	88	89.8	83.3	100	92	89.7	68.3	75
4th	89.3	95	88.5	88.9	94.7	95	56.3	66.67
5th	92.9	95	95	95	85.7	95	80.8	59.37
6th	95	95	92	88.9	94.3	90.9	70.6	88.46
7th	94.6	95	95	85.7	85.79	96.9	51.9	75
8th	95	93.9	95	92	89.7	100	72.7	60.87

MMS

MATH	2001-2002	2002-2003	2003-2004	2004-2005	2005-2006	2006-2007	2007-08	2008-09
6th	87.6	93.5	94.5	94.7	55.6	56.9	70	75.6
7th	90	86.5	86.8	84.6	61	57.7	60.9	78.91
8th	83.1	86	87	86.5	56.8	62.6	66.1	78.12
READING	2001-2002	2002-2003	2003-2004	2004-2005	2005-2006	2006-2007	2007-08	2008-09
6th	77.5	89.6	85.5	86.9	85.8	87.3	65.1	67.24
7th	83.1	86.2	89.5	90	90.5	86.6	46.9	64.62
8th	87.6	91.4	89.7	93.3	92	91.7	55.7	63.67

Macon County Schools

EOGs 2002-09

Percent Proficient

Nantahala

MATH	2001-2002	2002-2003	2003-2004	2004-2005	2005-2006	2006-2007	2007-08	2008-09
3rd	85.7	77.8	95	91.7	55.6	54.5	44.4	75
4th	90	*	95	88.9	63.6	37.5	54.5	60
5th	61.5	88.9	77.8	90	87.5	72.7	57.1	60
6th	95	83.3	90	100	30	55.6	70	66.66
7th	90	95	86.7	91.7	80	55.6	77.8	77.77
8th	80	95	83.3	88.2	72.7	80	62.5	66.66
READING	2001-2002	2002-2003	2003-2004	2004-2005	2005-2006	2006-2007	2007-08	2008-09
3rd	71.4	88.9	75	100	77.8	81.8	22.2	58.33
4th	90	*	75	77.8	63.6	95	36.4	60
5th	69.2	88.9	66.7	90	>=95	95	42.9	50
6th	75	75	90	100	80	100	40	66.66
7th	80	95	73.3	91.7	80	77.8	44.4	66.66
8th	90	95	95	94.1	90.9	80	50	66.66

South Macon

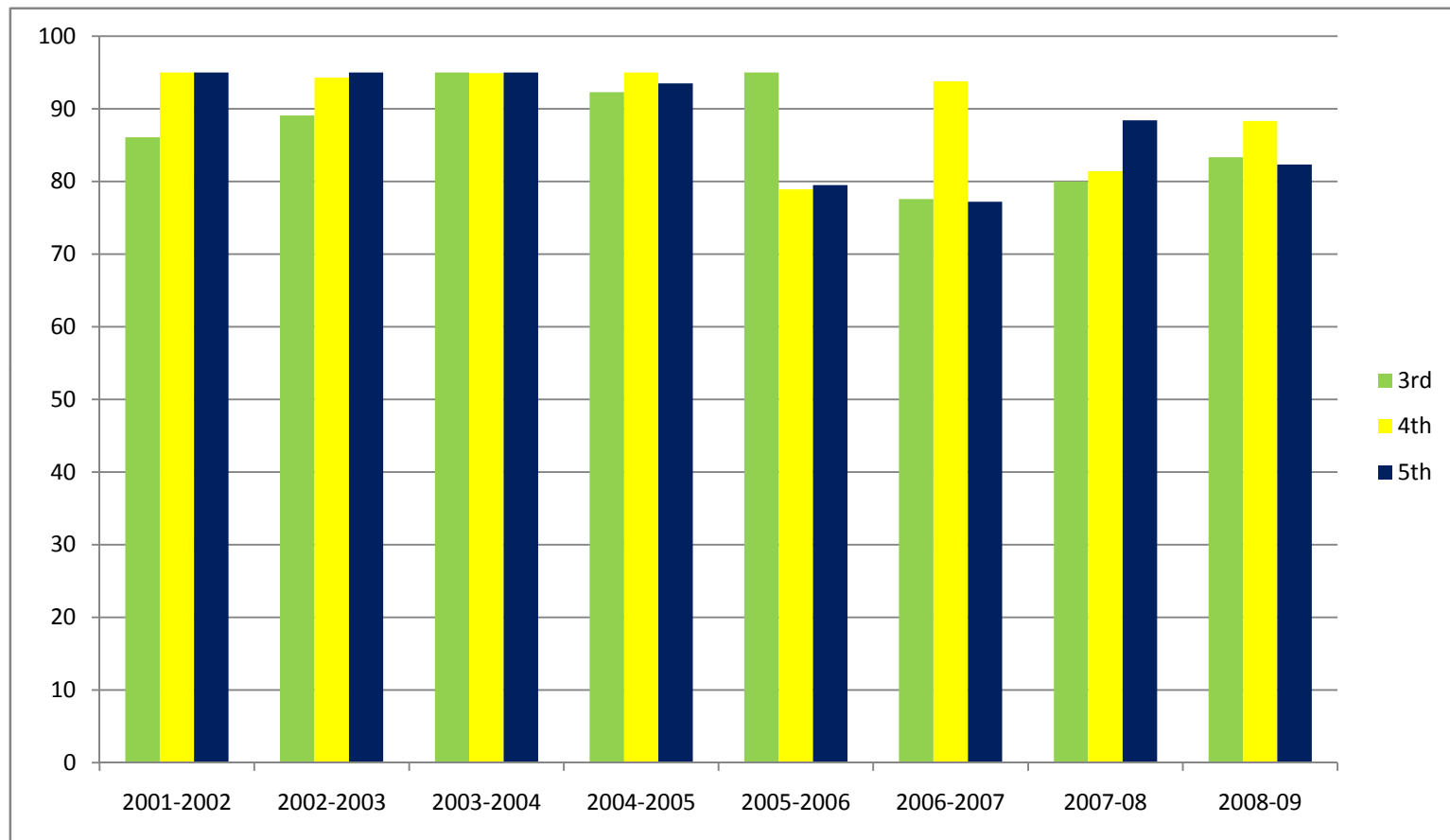
MATH	2001-2002	2002-2003	2003-2004	2004-2005	2005-2006	2006-2007	2007-08	2008-09
3rd	88.2	89.5	95	93.3	77.3	71.9	80.4	89.01
4th	95	95	95	95	75.6	69.9	71.6	87.75
5th	89.6	93.3	95	95	55	71.9	47.1	80.72
READING	2001-2002	2002-2003	2003-2004	2004-2005	2005-2006	2006-2007	2007-08	2008-09
3rd	83.3	89.5	92	95	81.8	80.9	60.8	71.42
4th	84.5	94.9	91.1	83.1	89.5	89	63.6	73.46
5th	87	95	93.8	92.6	92.5	87.6	41.4	72.28

Union

MATH	2001-2002	2002-2003	2003-2004	2004-2005	2005-2006	2006-2007	2007-08	2008-09
7th	Not a school		→→	→→	→→	→→	→→	70
8th		→→	→→	→→	→→	→→	→→	55.55
READING	2001-2002	2002-2003	2003-2004	2004-2005	2005-2006	2006-2007	2007-08	2008-09
7th	Not a school		→→	→→	→→	→→	→→	30
8th		→→	→→	→→	→→	→→	→→	55.55

Macon County Schools								
EOGs 2002-09								
Percent Proficient								
Macon County								
MATH	2001-2002	2002-2003	2003-2004	2004-2005	2005-2006	2006-2007	2007-08	2008-09
3rd	88.4	89.6	94.7	93.4	73.1	71.6	78.39	81.4
4th	95	95	95	94.6	73	69.4	77.88	85.1
5th	93		95	94.6	68	74.6	67.08	75.8
6th	89.2	93.7	94.8	95	56.2	58.2	70.72	75.5
7th	90.9	87.3	87.5	85	61.9	59.5	62.15	77.4
8th	83.6	87.6	87.4	86.1	56.9	65	68.9	75.5
READING	2001-2002	2002-2003	2003-2004	2004-2005	2005-2006	2006-2007	2007-08	2008-09
3rd	85.1	86.5	84.5	87.8	85	85.4	53.3	63
4th	83.9	87.1	86.7	84.1	87.6	91.1	61.3	67.7
5th	90.4		90.8	92.5	94.1	93.7	55.8	67.7
6th	79.5	89.6	86.1	87.4	86.5	88.3	64.6	69
7th	84.4	87.3	89.2	89.7	89.9	87.3	47.2	64.4
8th	88.7	91.9	90.5	93.2	91.8	92.2	57.2	63.1
						PAGE 4	(PD 7/16/09)	

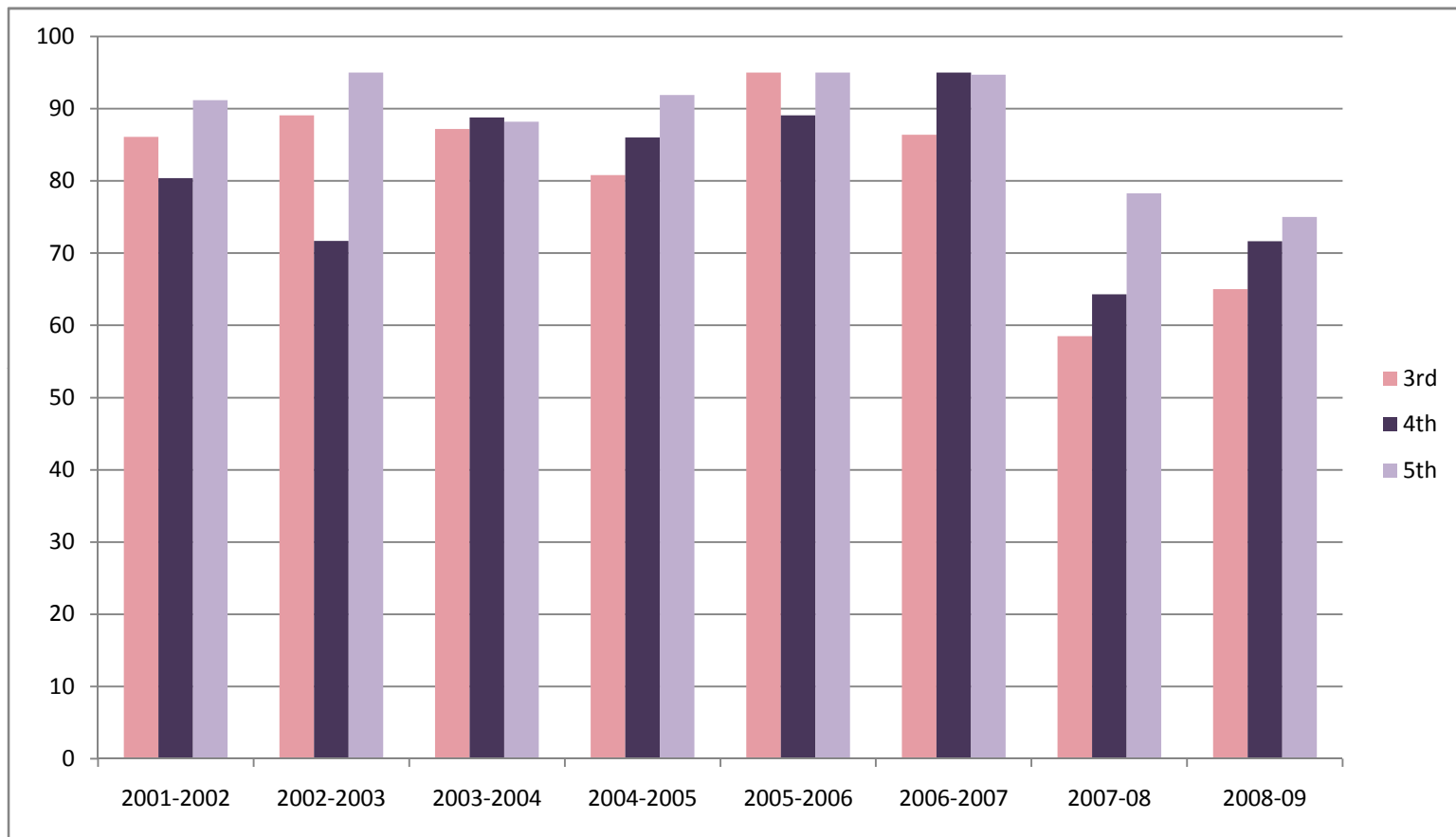
**CARTOOGECHAYE
EOG MATHEMATICS
PERCENT PROFICIENT
2002-2009**



***The EOG Math test was renormed in 2006-07
*The EOG Reading test was renormed in 2008-09**

(PD 7/15/09)

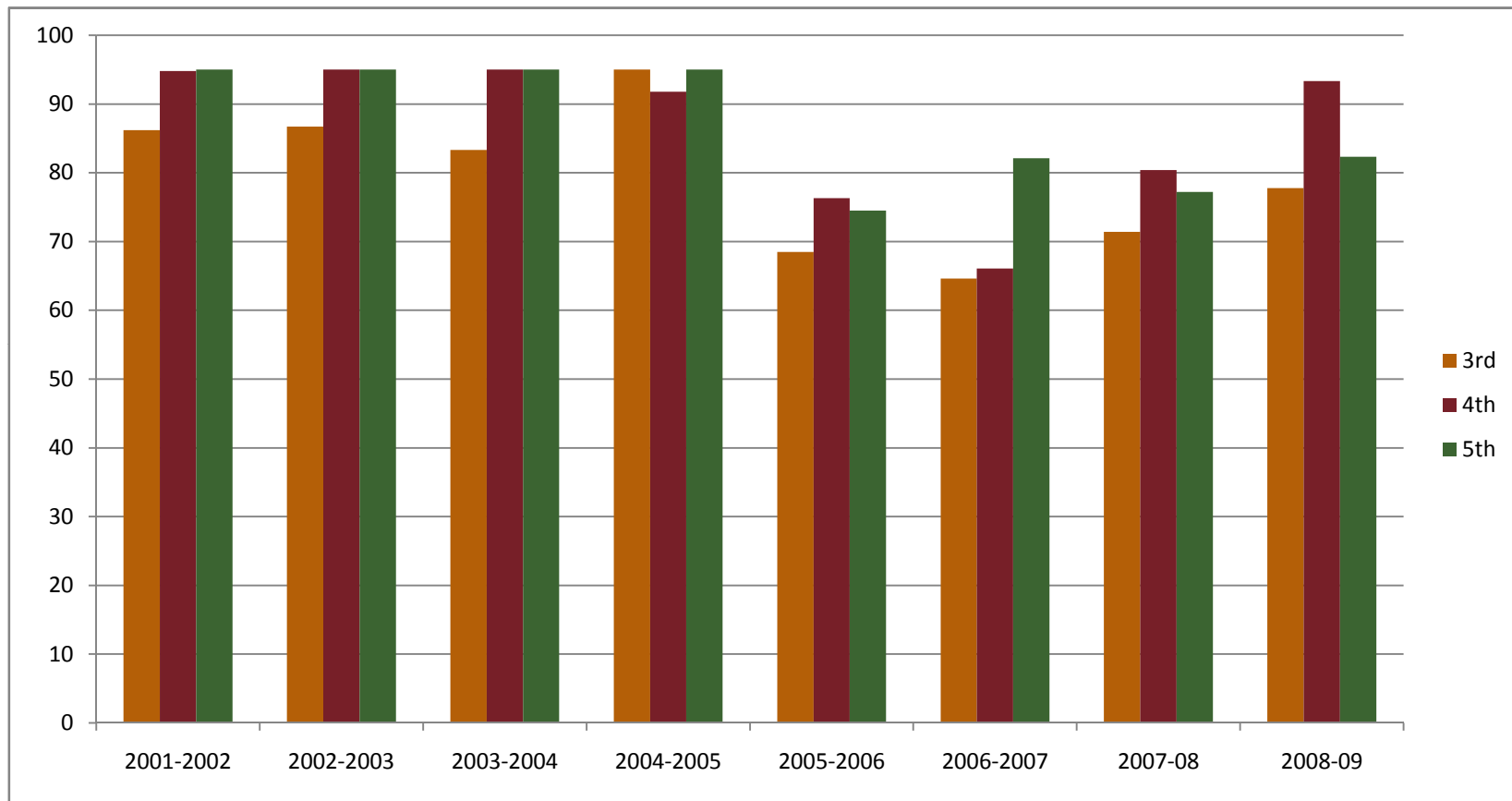
**CARTOOGECHAYE SCHOOL
EOG READING
PERCENT PROFICIENT
2002-2009**



***The EOG Math test was renormed in 2006-07
*The EOG Reading test was renormed in 2008-09**

(PD 7/15/09)

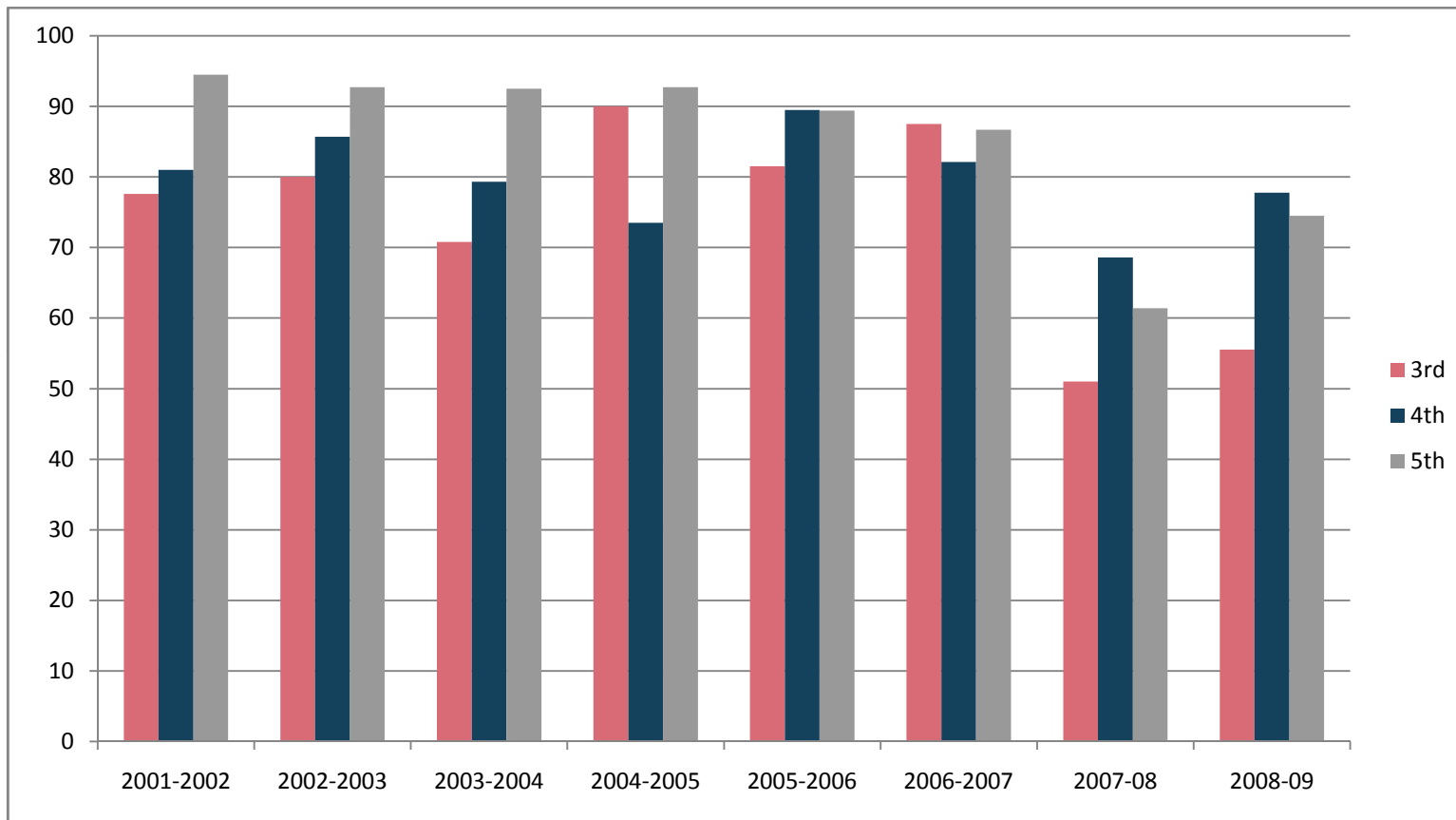
**COWEE SCHOOL
EOG MATH
PERCENT PROFICIENT
2002-2009**



***The EOG Math test was renormed in 2006-07
*The EOG Reading test was renormed in 2008-09**

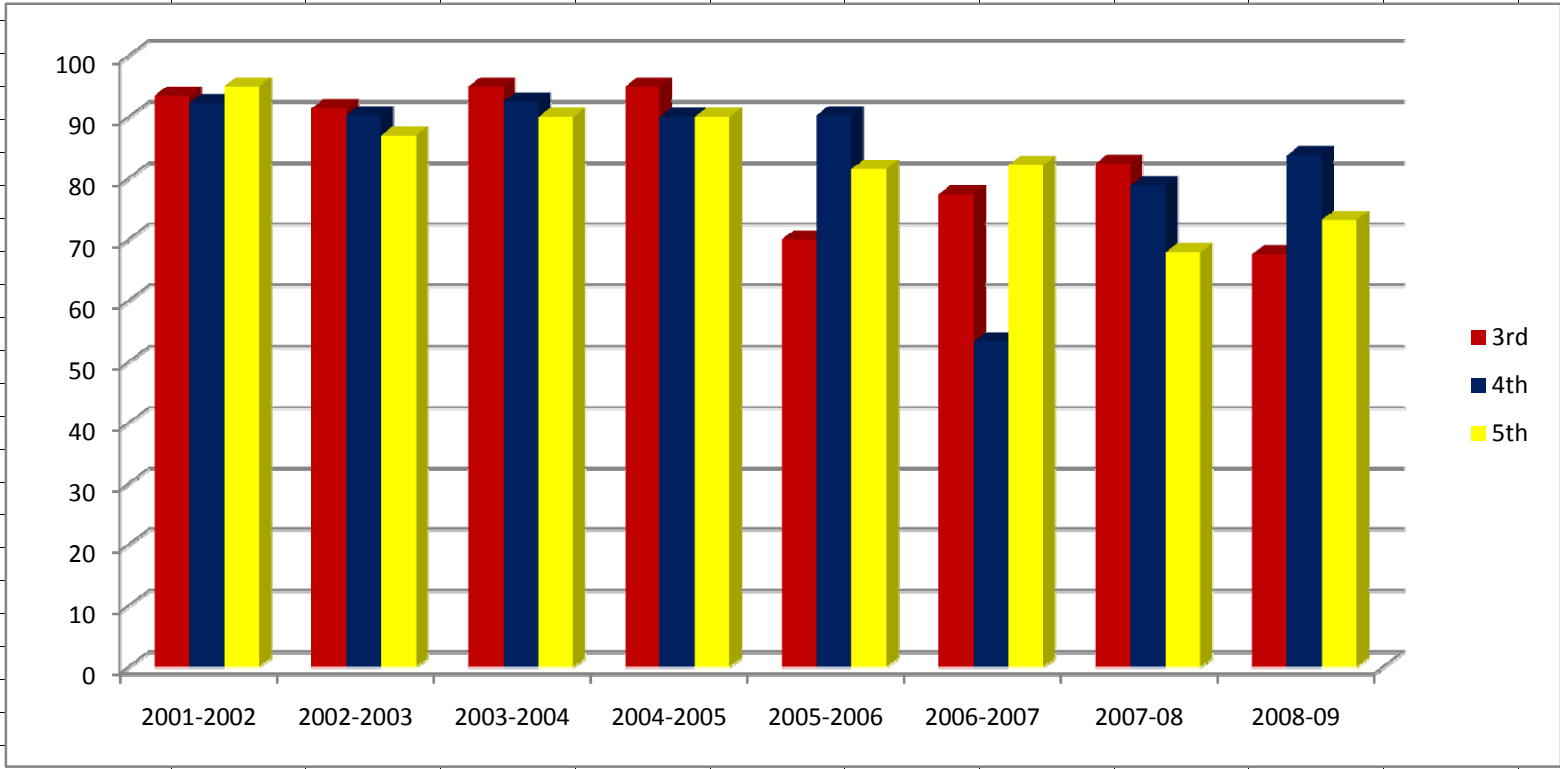
(PD 7/15/09)

**COWEE SCHOOL
EOG READING
PERCENT PROFICIENT
2002-2009**

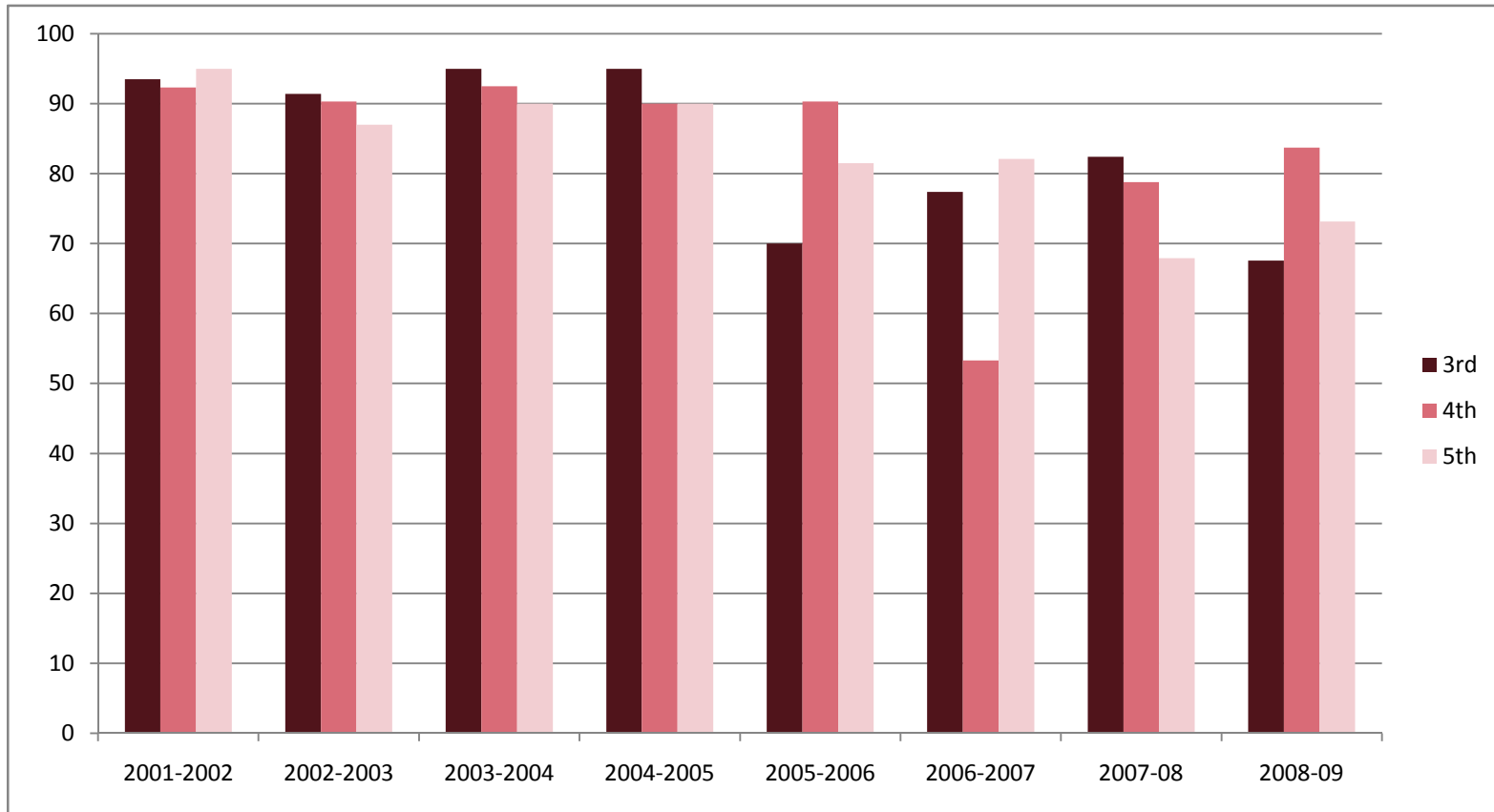


***The EOG Math test was renormed in 2006-07
*The EOG Reading test was renormed in 2008-09**

(PD 7/15/09)



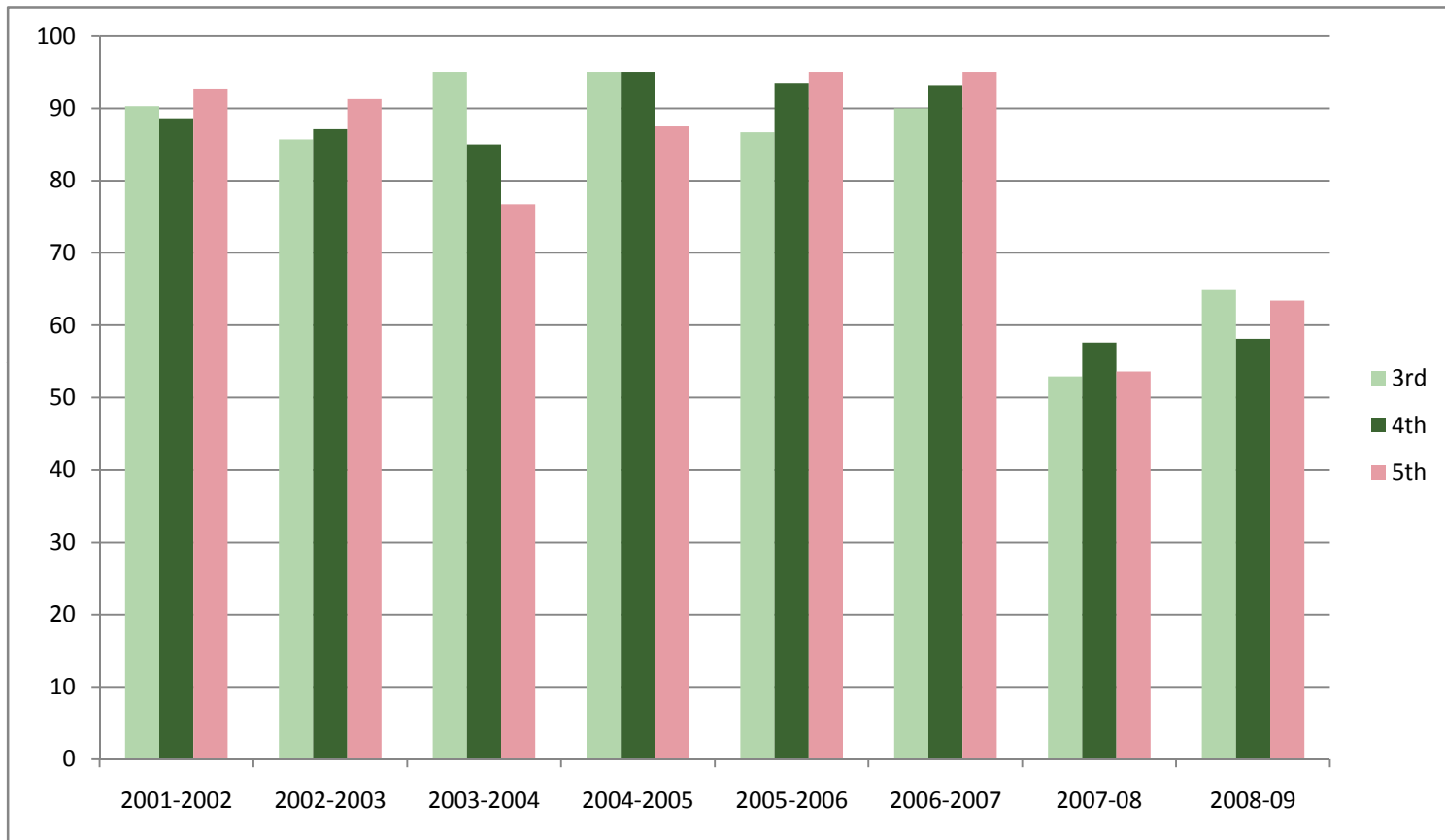
**CULLASAJA
EOG MATH
PERCENT PROFICIENT
2002-2009**



***The EOG Math test was renormed in 2006-07
*The EOG Reading test was renormed in 2008-09**

(PD 7/15/09)

**CULLASAJA SCHOOL
EOG READING
PERCENT PROFICIENT
2002-2009**

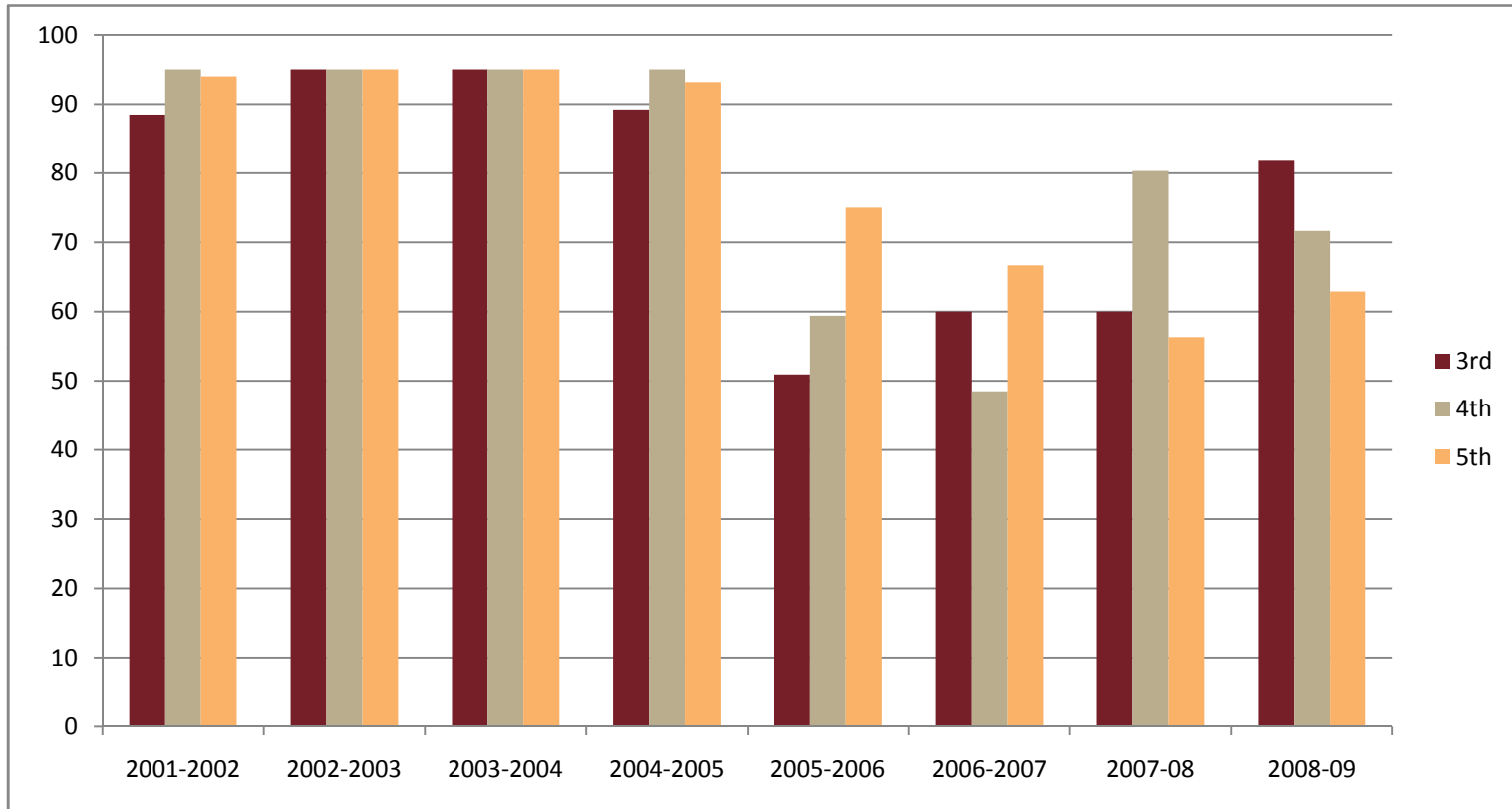


***The EOG Math test was renormed in 2006-07
*The EOG Reading test was renormed in 2008-09**

(PD 7/15/09)

	East Franklin							
	Percent Proficient							
	2002-09							
MATH	2001-2002	2002-2003	2003-2004	2004-2005	2005-2006	2006-2007	2007-08	2008-09
3rd	88.5	95	95	89.2	50.9	60	60	81.81
4th	95	95	95	95	59.4	48.5	80.3	71.66
5th	94	95	95	93.2	75	66.7	56.3	62.9
READING	2001-2002	2002-2003	2003-2004	2004-2005	2005-2006	2006-2007	2007-08	2008-09
3rd	91.8	89.8	79.4	70.8	72.7	78.6	32.8	46.29
4th	82.8	87	89.1	85.7	76.1	81.8	57.6	55.17
5th	92.6	91.1	95	94.9	95	81.8	36.6	58.06
							(PD 7/15/09)	

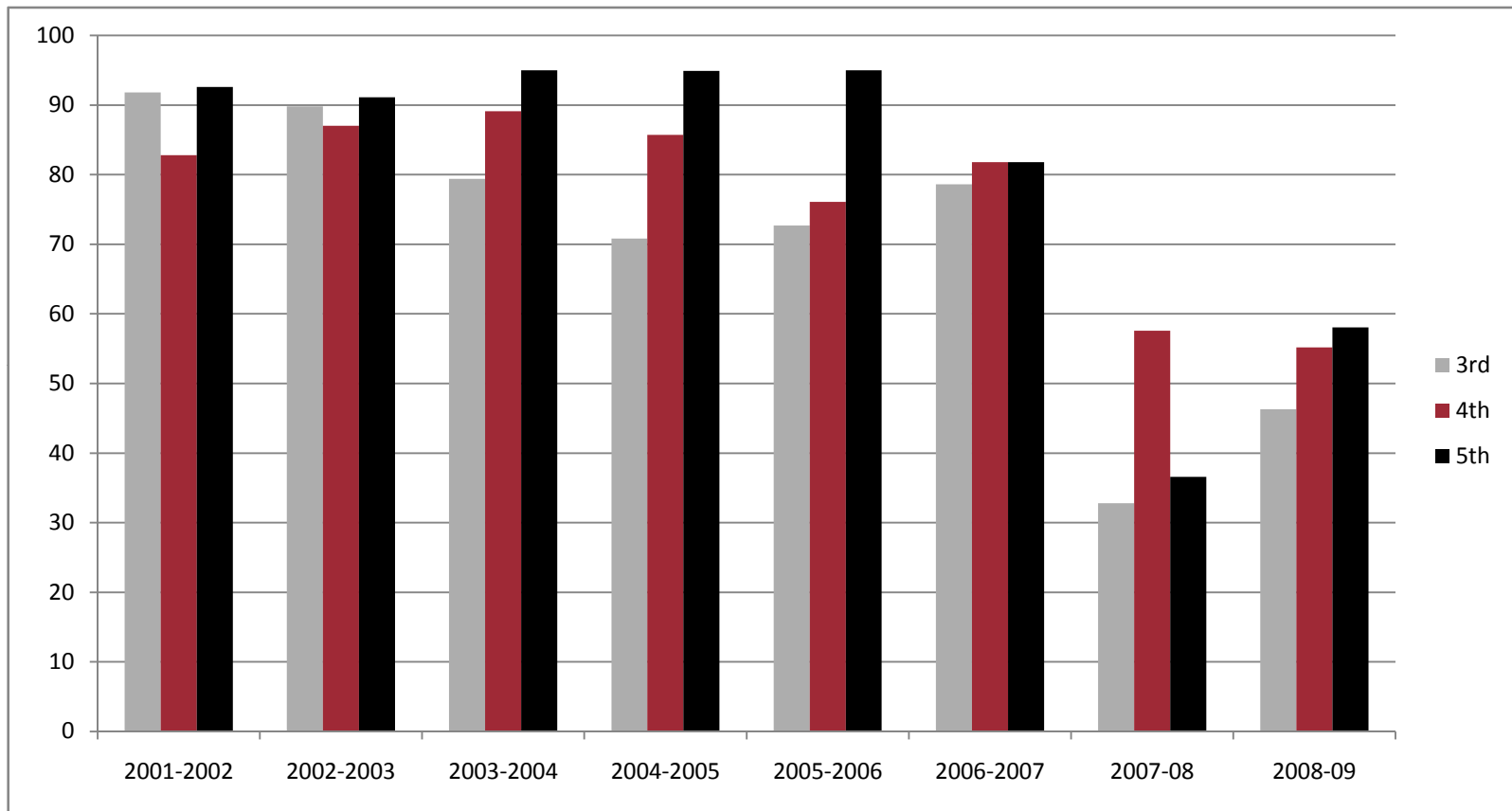
**EAST FRANKLIN
EOG MATH
PERCENT PROFICIENT
2002-2009**



***The EOG Math test was renormed in 2006-07
*The EOG Reading test was renormed in 2008-09**

(PD 7/15/09)

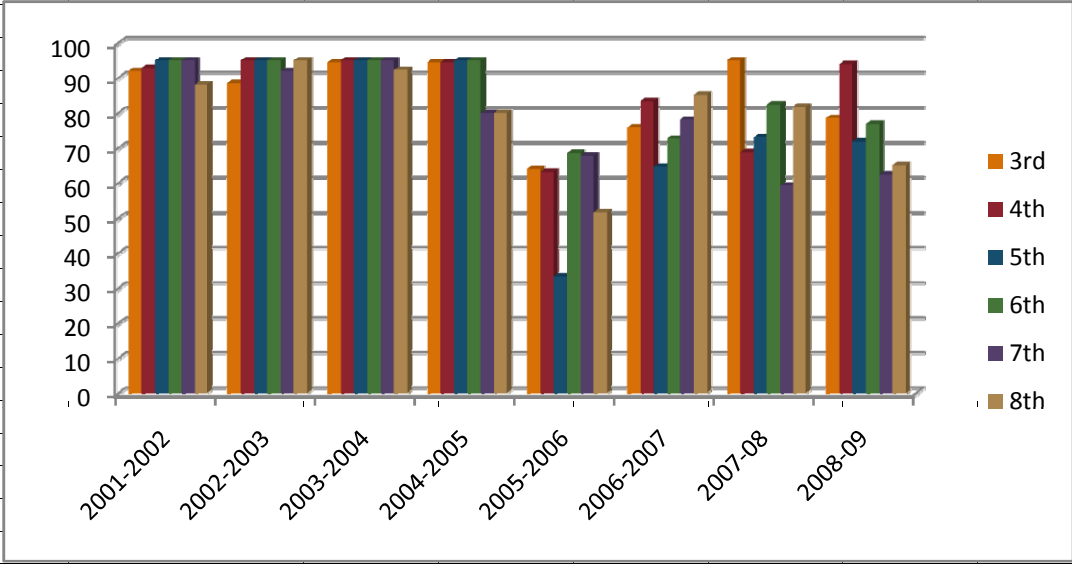
**EAST FRANKLIN
EOG READING
PERCENT PROFICIENT
2002-2009**



***The EOG Math test was renormed in 2006-07
*The EOG Reading test was renormed in 2008-09**

(PD 7/15/09)

	A	B	C	D	E	F	G	H	I	J	K
72											
73											
74											
75											
76											
77											
78											
79											
80											
81											
82											
83											
84											
85											
86											
87											
88											
89											
90											
91											
92											

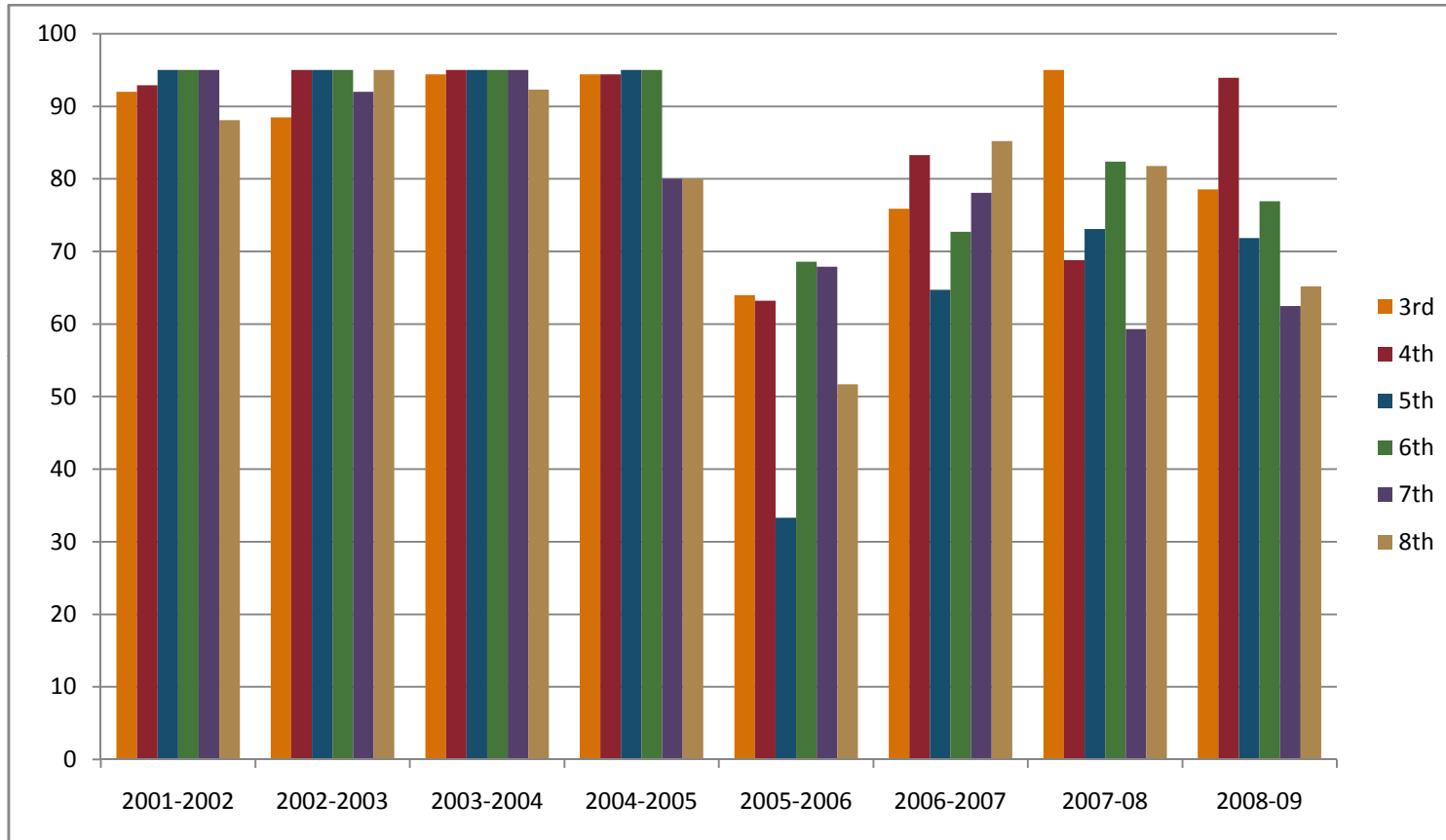


	L	M
1		
2		
3		
4		
5		
6		
7		
8		
9		
10		
11		
12		
13		
14		
15		
16		
17		
18		
19		
20		
21		
22		
23		
24		
25		
26		
27		
28		
29		
30		
31		
32		
33		
34		
35		

	L	M
36		
37		
38		
39		
40		
41		
42		
43		
44		
45		
46		
47		
48		
49		
50		
51		
52		
53		
54		
55		
56		
57		
58		
59		
60		
61		
62		
63		
64		
65		
66		
67		
68		
69		
70		
71		

	L	M
72		
73		
74		
75		
76		
77		
78		
79		
80		
81		
82		
83		
84		
85		
86		
87		
88		
89		
90		
91		
92		

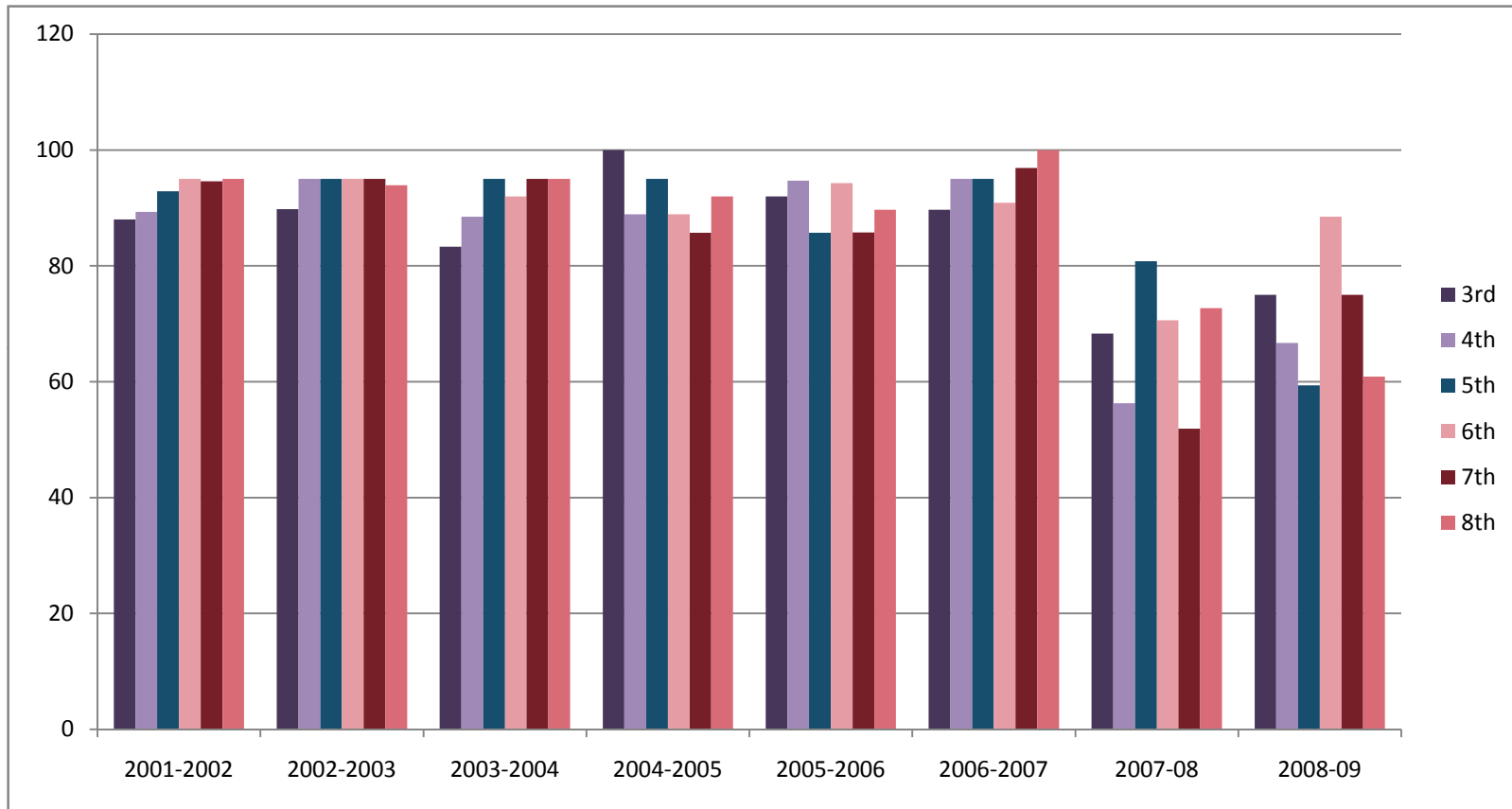
**HIGHLANDS SCHOOL
EOG MATH
PERCENT PROFICIENT
2002-2009**



***The EOG Math test was renormed in 2006-07
*The EOG Reading test was renormed in 2008-09**

(PD 7/15/09)

**HIGHLANDS SCHOOL
EOG READING
PERCENT PROFICIENT
2002-2009**

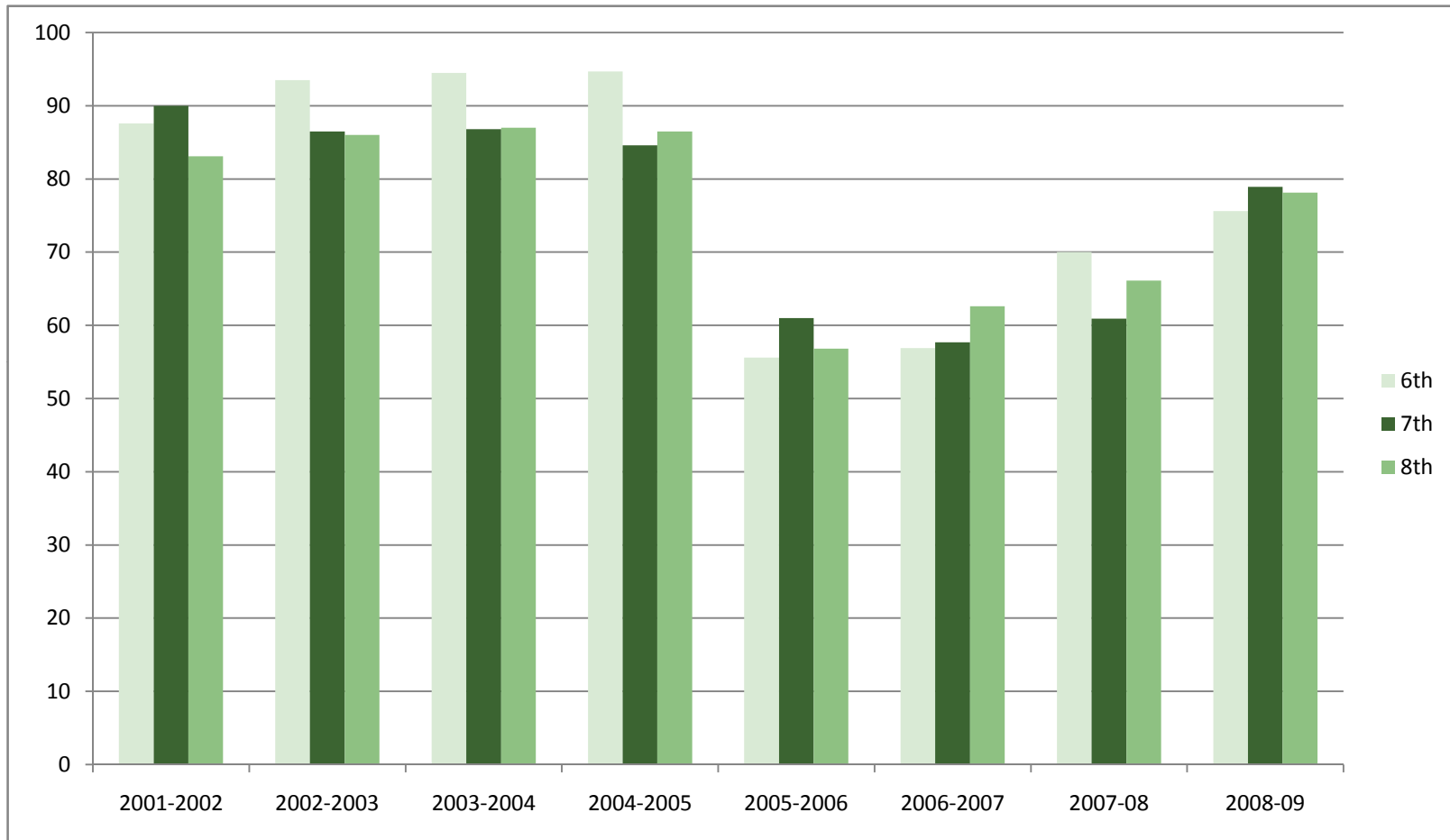


***The EOG Math test was renormed in 2006-07
*The EOG Reading test was renormed in 2008-09**

(PD 7/15/09)

		MMS							
		Percent Proficient							
		2002-09							
MATH	2001-2002	2002-2003	2003-2004	2004-2005	2005-2006	2006-2007	2007-08	2008-09	
6th	87.6	93.5	94.5	94.7	55.6	56.9	70	75.6	
7th	90	86.5	86.8	84.6	61	57.7	60.9	78.91	
8th	83.1	86	87	86.5	56.8	62.6	66.1	78.12	
READING	2001-2002	2002-2003	2003-2004	2004-2005	2005-2006	2006-2007	2007-08	2008-09	
6th	77.5	89.6	85.5	86.9	85.8	87.3	65.1	67.24	
7th	83.1	86.2	89.5	90	90.5	86.6	46.9	64.62	
8th	87.6	91.4	89.7	93.3	92	91.7	55.7	63.67	
							(PD 7/15/09)		

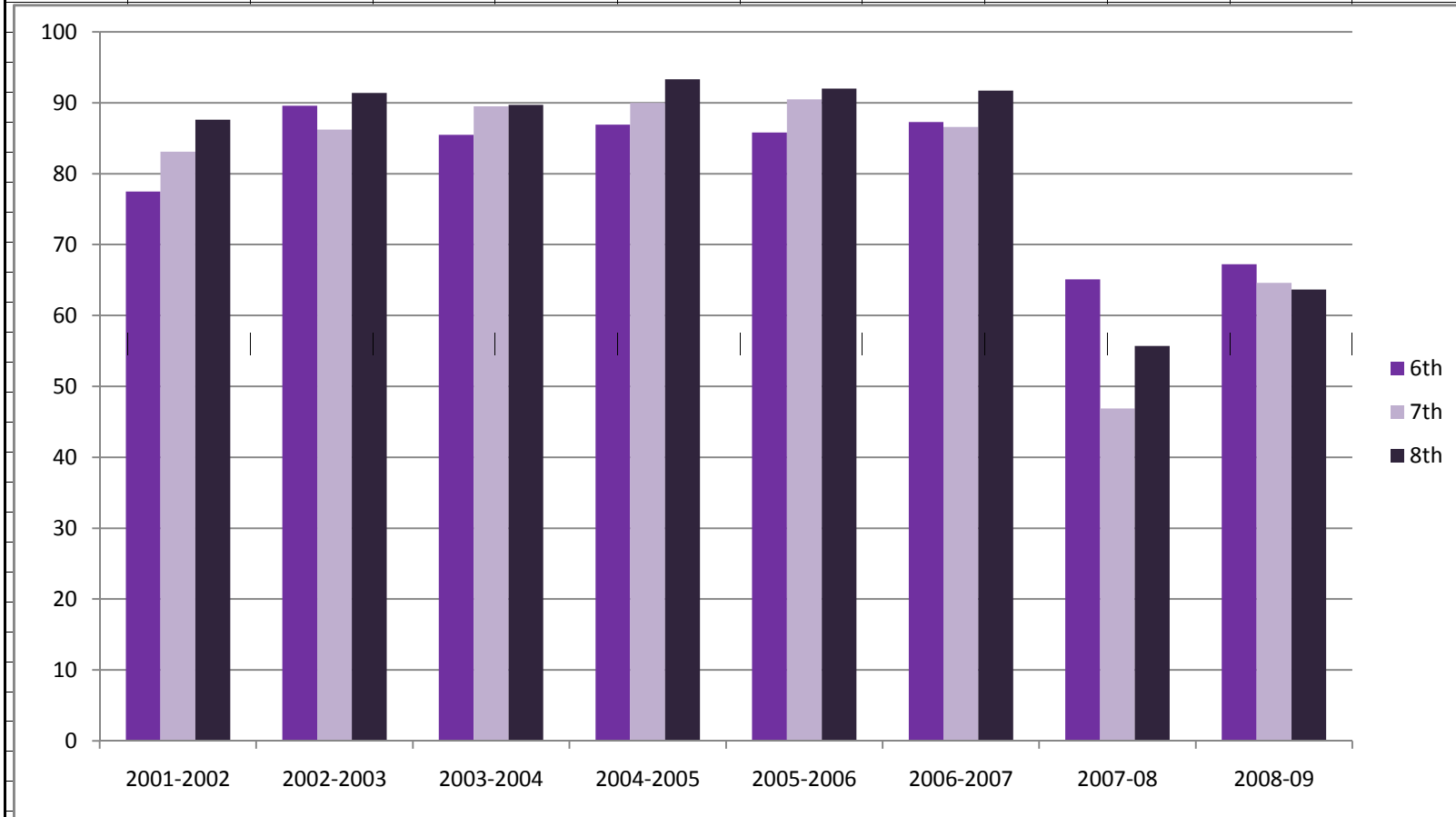
**MACON MIDDLE SCHOOL
EOG MATHEMATICS
PERCENT PROFICIENT
2002-2009**



***The EOG Math test was renormed in 2006-07
*The EOG Reading test was renormed in 2008-09**

(PD 7/15/09)

**MACON MIDDLE SCHOOL
EOG READING
PERCENT PROFICIENT
2002-2009**

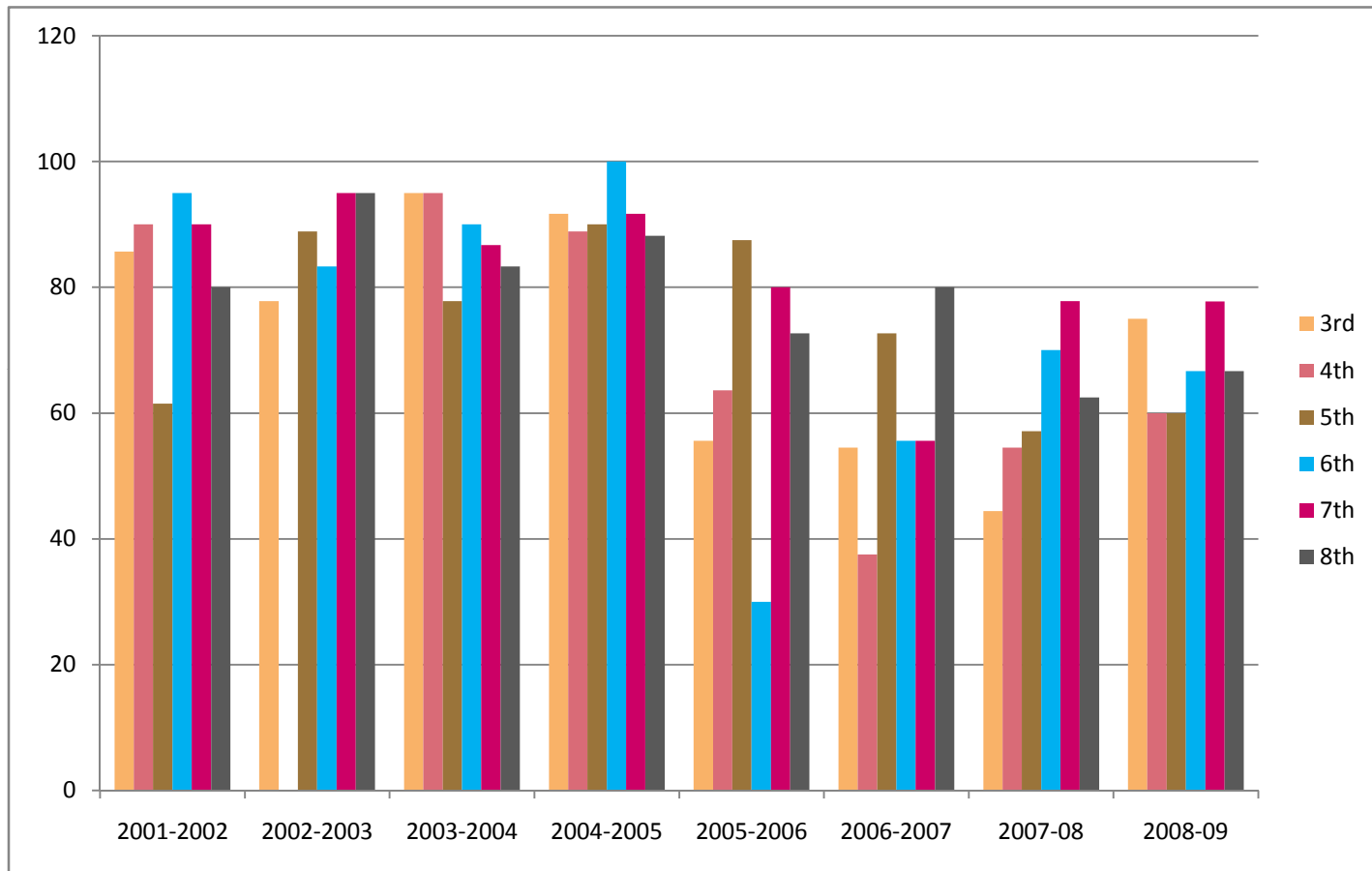


*The EOG Math test was renormed in 2006-07
*The EOG Reading test was renormed in 2008-09

(PD 7/15/09)

		Nantahala							
		Percent Proficient							
		2002-09							
MATH	2001-2002	2002-2003	2003-2004	2004-2005	2005-2006	2006-2007	2007-08	2008-09	
3rd	85.7	77.8	95	91.7	55.6	54.5	44.4	75	
4th	90	*	95	88.9	63.6	37.5	54.5	60	
5th	61.5	88.9	77.8	90	87.5	72.7	57.1	60	
6th	95	83.3	90	100	30	55.6	70	66.66	
7th	90	95	86.7	91.7	80	55.6	77.8	77.77	
8th	80	95	83.3	88.2	72.7	80	62.5	66.66	
READING	2001-2002	2002-2003	2003-2004	2004-2005	2005-2006	2006-2007	2007-08	2008-09	
3rd	71.4	88.9	75	100	77.8	81.8	22.2	58.33	
4th	90	*	75	77.8	63.6	95	36.4	60	
5th	69.2	88.9	66.7	90	>=95	95	42.9	50	
6th	75	75	90	100	80	100	40	66.66	
7th	80	95	73.3	91.7	80	77.8	44.4	66.66	
8th	90	95	95	94.1	90.9	80	50	66.66	
*Student Population is too small to report the value									
							(PD 7/15/09)		

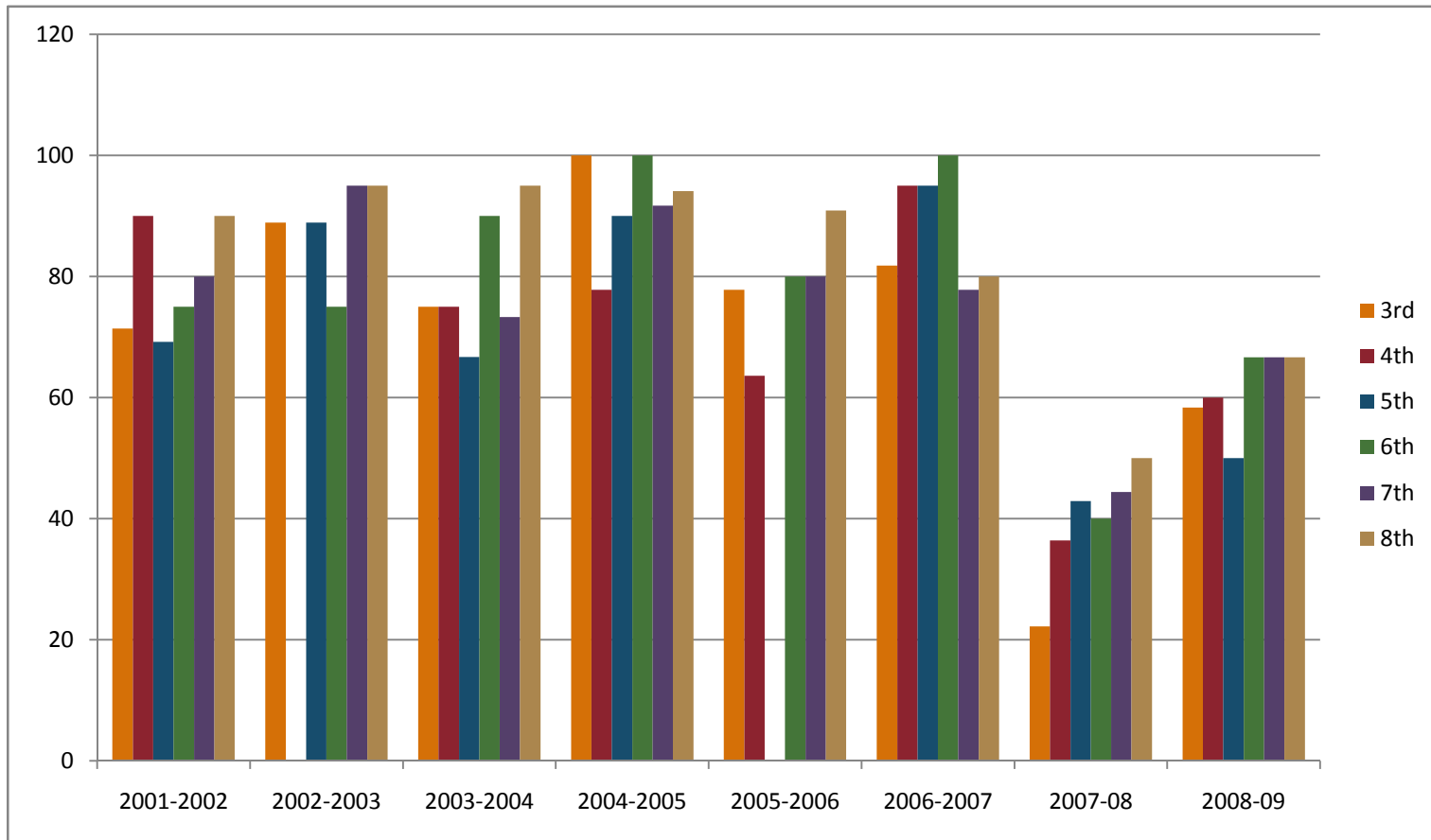
**NANTHALA SCHOOL
EOG MATH
PERCENT PROFICIENT
2002-2009**



***The EOG Math test was renormed in 2006-07
*The EOG Reading test was renormed in 2008-09**

(PD 7/15/09)

**NANTAHALA SCHOOL
EOG READING
PERCENT PROFICIENT
2002-2009**

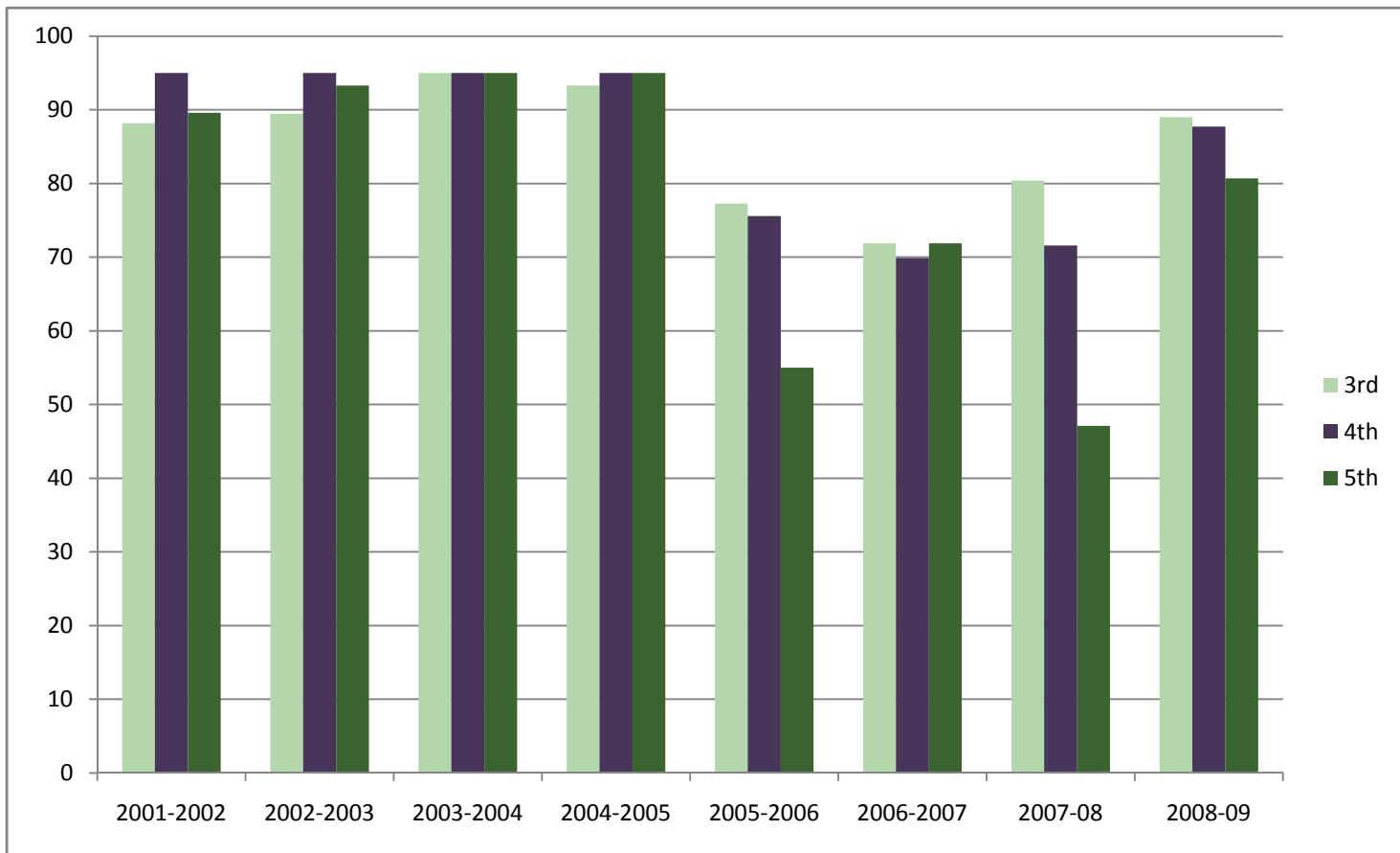


***The EOG Math test was renormed in 2006-07
*The EOG Reading test was renormed in 2008-09**

(PD 7/15/09)

		South Macon							
		Percent Proficient							
		2002-09							
MATH	2001-2002	2002-2003	2003-2004	2004-2005	2005-2006	2006-2007	2007-08	2008-09	
3rd	88.2	89.5	95	93.3	77.3	71.9	80.4	89.01	
4th	95	95	95	95	75.6	69.9	71.6	87.75	
5th	89.6	93.3	95	95	55	71.9	47.1	80.72	
READING	2001-2002	2002-2003	2003-2004	2004-2005	2005-2006	2006-2007	2007-08	2008-09	
3rd	83.3	89.5	92	95	81.8	80.9	60.8	71.42	
4th	84.5	94.9	91.1	83.1	89.5	89	63.6	73.46	
5th	87	95	93.8	92.6	92.5	87.6	41.4	72.28	
							(PD 7/15/09)		

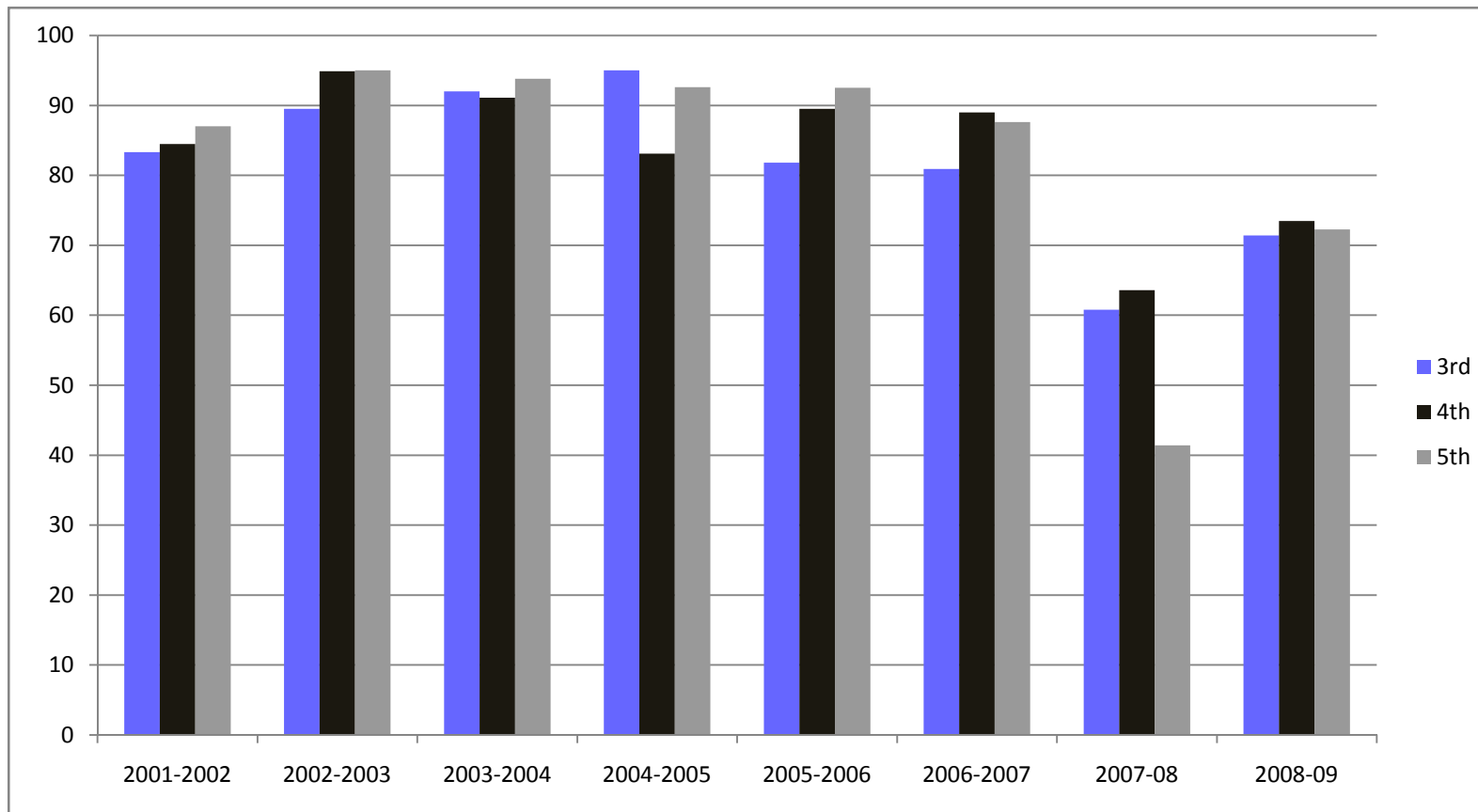
**SOUTH MACON
EOG MATH
PERCENT PROFICIENT
2002-2009**



***The EOG Math test was renormed in 2006-07
*The EOG Reading test was renormed in 2008-09**

(PD 7/15/09)

**SOUTH MACON
EOG READING
PERCENT PROFICIENT
2002-2009**



***The EOG Math test was renormed in 2006-07
*The EOG Reading test was renormed in 2008-09**

(PD 7/15/09)

	A	B	C	D	E	F	G	H	I
1			Union						
2			Percent Proficient						
3			2002-09						
4									
5	MATH	2001-2002	2002-2003	2003-2004	2004-2005	2005-2006	2006-2007	2007-08	2008-09
6	7th	Not a school	→→	→→	→→	→→	→→	→→	70
7	8th		→→	→→	→→	→→	→→	→→	55.55
8									
9									
10	READING	2001-2002	2002-2003	2003-2004	2004-2005	2005-2006	2006-2007	2007-08	2008-09
11	7th	Not a school	→→	→→	→→	→→	→→	→→	30
12	8th		→→	→→	→→	→→	→→	→→	55.55
13									
14								(PD 7/15/09)	